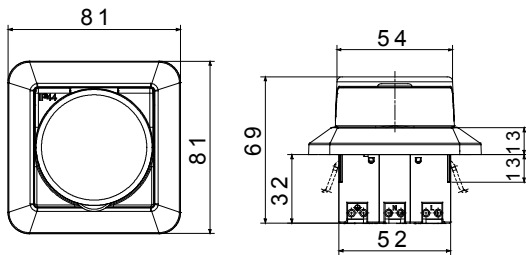




Description	Socket with residual current protection
Code	RCD
No. of poles	1P+N
Colour	Black RAL 9005
Rated current	16 A
Rated residual operating current	10 mA
Type	A
Rated voltage (EN/IEC 61008-1, 61008-2-1)	230/240 V

IP degree	IP44	Rated frequency (Hz)	50Hz
RCD Delay	Without time delay	Rated impulse withstand voltage (Uimp)	4 kV
Overvoltage category	III	Nominal making and breaking capacity	500 A
Rated conditional short-circuit current	3.000 A	Section rigid cable	Min 1,5 mm ² - Max 2,5 mm ²
Section flexible cable	Min 1,5 mm ² - Max 2,5 mm ²	Terminal type	Without screws
Assembly position	Flush type or surface type	Operating temperature	-5° - +40° (acc. To IEC), -25° - +40° (acc. To EN)
Electrical endurance	2000	Mechanical endurance	4000
Standard	CEE 7 - standard sheet III	Earth connection	Grounding

DIMENSIONAL



WIRING DIAGRAM



STANDARDS/APPROVALS

